

Ceilings & Walls

Rosette Washers & Screws



For fastening ceiling board. 1" diameter, white. Center hole for 6# screw.

- 260401** Rosette Only; 200/Bag
- 263106** Screw Only; 200/Bag
- 260410** Rosette & Screw; 250/Pk.



Putty Knife

High impact plastic for fast, easy clean-up. 3.5" long handles and 3.5" long blades. Hang hole for storage or display.

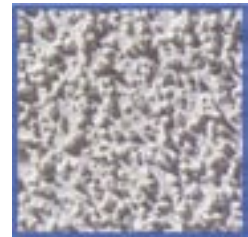
- 381105** 2"
- 381106** 3"
- 381107** 4"



Easy Touch Acoustic Texture

Patch "popcorn" or "cottage cheese" type ceiling textures fast. Contains actual polystyrene chips to match commercially-applied textures. Patch small areas up to 2 sq. ft. 16 oz.

- 185027** Medium
- 185028** Coarse



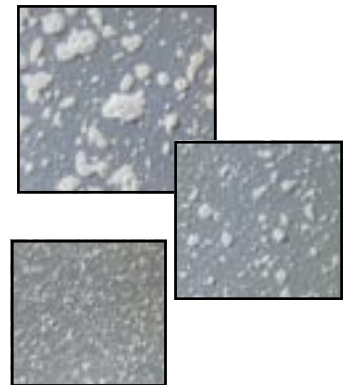
Easy Touch Knockdown Texture



Water-based; matches knock-down "Mediterranean" and splatter-type wall and ceiling textures. Two different application straws for either a heavy or medium pattern. Patches small areas up to 8 sq. ft. Single 20 oz. can provides up to 16 sq. ft. of coverage.

185025

Easy Touch Spray Texture



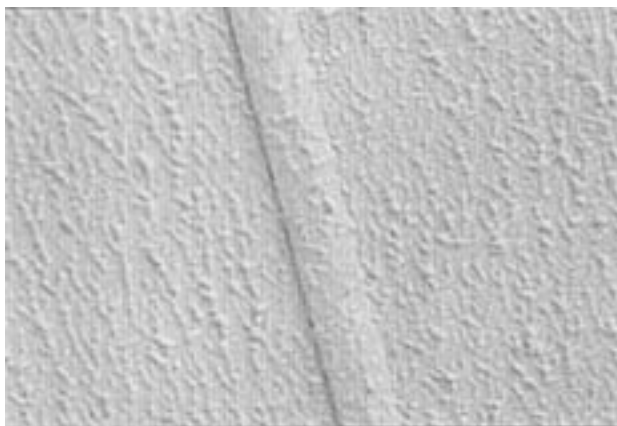
Fast-drying, oil-based. Three color-coded straws let you chose the perfect match for "orange peel" splatter textures. Up to 100 sq. ft. coverage from 20 oz. can.

185026

SeaSpray Brand Hi-Strength MVR Ceiling Panels

Attractive textured ceiling panels and a code-approved moisture/vapor retarder, all in one easy to use product. Manufactured with a high strength gypsum core with increased uniformity and integrity to increase sag resistance. Field tests prove these new 5/16" panels provide superior sag resistance to regular gypsum core, even when installed over framing 24" o.c. using foam adhesive attachment methods.

- Five year limited warranty against visible sag
- Meets HUD standards of 1 perm or less for vapor retarder
- Square edged linear panels are coated with durable latex finish that resists surface marking
- Bolder, heavier texture helps hide joints
- Fire resistant, UL labled; meets HUD safety standards
- Easy to install (and eliminates need for applying other vapor retarders)
- Improved sag resistance
- 24" o.c. foam adhesive attachment
- Built-in vapor barrier
- Hard painted surface
- Easy touch-up



Pictured with optional decorative battens

200005 4' x 13' 9-1/2" x 5/16"
200006 4' x 13' 8" x 5/16"



Not Stocked At All Locations

Wallboard



Available by custom order only, designed to meet your specific needs. Choose from a variety of substrates and overlays:

Substrates:

Plywood
 Particle Board
 MDF
 OSB
 Luan
 Gypsum

Overlays:

PVC Vinyls
 Top Coated Papers
 Low Pressure Melamine Saturated
 High Pressure Laminate
 Polyester Film



200010 Panel

Easy Touch Acoustic Texture Kit



Kit includes sprayer and acoustic polystyrene chip texture.

185030 Kit
185031 Refill

Homax Wall & Ceiling Repair Patch



For drywall, plaster and other flat surfaces.

Metal patch with self-adhesive mesh backing permanently repairs holes in walls and ceilings. Refinish to create an invisible patch. Ideal for quick repair of interior drywall and plaster surfaces.

260417 6" Patch

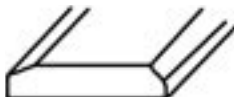
WOOD & PLASTIC MOLDING & TRIM

Quality, pre-finished wood and plastic trim molding.



Screen Trim

- 269103** 12' Dark Wood; 84/Pkg.
- 269128** 12' Light Wood; 84/Pkg.
- 269162** 12' White Wood; 84/Pkg.
- 269121** 12' Almond Wood; 84/Pkg.



Ceiling Beam

- 269106** 13.6' White Painted Wood; 100/Pkg.



Chair Rail

- 269114** 10' Dark Wood; 50/Pkg.
- 269127** 10' Almond Wood; 50/Pkg.
- 269163** 10' White Paper-Wrapped MDF; 50/Pkg.



3/4" Outside Corner

- 269109** 8' Medium Brown Plastic; 150/Pkg.
- 269110** 8' Light Plastic; 150/Pkg.
- 269124** 8' Almond Plastic; 150/Pkg.
- 269166** 8' White Paper-Wrapped Plastic; 150/Pkg.
- 269178** 8' Indian Oak Paper-Wrapped Plastic; 150/Pkg.



1" Outside Corner

- 269132** 8' Medium Brown Plastic; 125/Pkg.
- 269131** 8' Almond Plastic; 125/Pkg.
- 269130** 8' Light Plastic; 125/Pkg.
- 269167** 8' White Plastic; 125/Pkg.



Inside Corner

- 269107** 8' Medium Brown Wood; 160/Pkg.
- 269108** 8' Light Wood; 200/Pkg.
- 269123** 8' Almond Wood; 160/Pkg.
- 269165** 8' White Wood; 160/Pkg.

1/4" Shoe Stop



- 269111** 7' Medium Brown Wood; 200/Pkg.
- 269112** 7' Light Wood; 200/Pkg.
- 269125** 7' Almond Wood; 170/Pkg.
- 269168** 7' White Paper-Wrapped MDF; 170/Pkg.
- 269176** 8' Indian Oak Paper-Wrapped MDF; 125/Pkg.

3/4" Shoe Stop



- 269115** 7' Light Wood; 125/Pkg.
- 269116** 7' Medium Brown Wood; 125/Pkg.
- 269169** 7' White Paper-Wrapped MDF; 125/Pkg.
- 269180** 7' Indian Oak Paper-Wrapped Luan; 100/Pkg.

NEW!



3/4" x 8' Batten

- 269104** Medium Brown Wood; 300 Pkg.
269105 Light Wood; 300 Pkg.
269122 Almond Wood; 300 Pkg.
269170 White Paper-Wrapped MDF; 300 Pkg.



1.5" x 8' Batten

- 269179** Indian Oak Paper-Wrapped Luan; 175/Pkg.
269174 White Paper-Wrapped Luan; 175/Pkg.



1" x 8' Batten

- 269117** Medium Brown Wood; 225/Pkg.
269118 Light Wood; 225/Pkg.
269171 White Paper-Wrapped MDF; 225/Pkg.
269177 Indian Oak Paper- Wrapped Luan; 250/Pkg.

Lip Molding 8'



- 269134** Brown Plastic; 150/Pkg.
269136 Almond Plastic; 150/Pkg.
269173 White Paper-Wrapped MDF; 150/Pkg.

Casing



- 269100** 86" Dark Wood; 60/Pkg.
269119 86" Almond Wood; 60/Pkg.
269172 86" White Paper-Wrapped MDF; 60/Pkg.
269175 86" Indian Oak Paperwrapped MDF; 175/Pkg.

Crown Cove

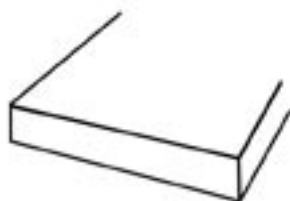


- 269113** 10' Dark Wood; 50/Pkg.
269126 10' Almond Wood; 50/Pkg.
269164 10' White Paper-Wrapped MDF; 50/Pkg.

Cove Casing



- 269101** 10' Medium Brown Painted Wood; 180/Pkg.
269102 10' Light Wood; 180/Pkg.
269120 7' Almond Wood; 180/Pkg.
269160 10' White Paper-Wrapped MDF; 180/Pkg.
269161 7' White Paper-Wrapped MDF; 180/Pkg.

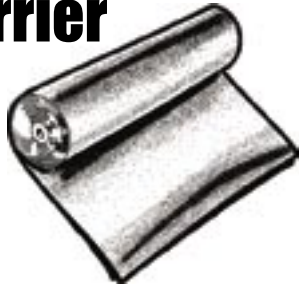


Door Jamb



- 269140** 2" x 7' Oak
269141 3.25" x 7' Oak
269142 4.5 x 7' Oak

Black Vapor Barrier



- 265000** 16' x 150', 6 mil
- 265004** 16' x 100', 6 mil
- 265002** 20' x 100', 6 mil
- 265005** 14' x 100', 6 mil
- 265001** 24' x 100', 6 mil

White/Black Vapor Barrier



- 264999** 16' x 100', 6 mil

White Close-off Film

(For secondary moves)



- 265003** 12' x 120', 6 mil
- 265009** 16' x 100', 6 mil
- 265006** 14' x 300', 5 mil
- 265008** 16' x 150', 6 mil

White Close-Off Tape



- 360725** 2" x 36 Yds.; 24/Ctn.
- 360726** 4" x 36 Yds.



FoamSeal[®]



- * Fills gaps between sections of home
- * Easy to install -- needs no special tools
- * Resists moisture penetration to interior of structure
- * Helps to seal out insects

Multi-purpose ridged sill plate gasket provides resilient sealing, a perfect seal for setting up double-wide homes.

265050 5.5" x 50' Roll

Dozens of other uses, too!



Center-Seal

Centerline Insulator

Foam is completely sealed inside a high-strength vapor barrier sheathing

Flexible insulating foam core



2-Ply flanges make it easy to fasten Centers-Seal to the mating surface around perimeter of home.

- ◆ Provides a continuous seal
- ◆ Withstands exposure to the elements
- ◆ Does not blow off during transport
- ◆ Lasts even through repeated resets
- ◆ Eliminates customer concern over visible daylight
- ◆ Superior insulation for better energy efficiency and protection against rodents and insects
- ◆ Compact, lightweight and easy to handle; no skin irritation
- ◆ Needs no special tools
- ◆ Installs faster than fiberglass, spray foam, etc.
- ◆ Unlike other materials, does not absorb moisture but blocks it, protecting home against structural and cosmetic damage

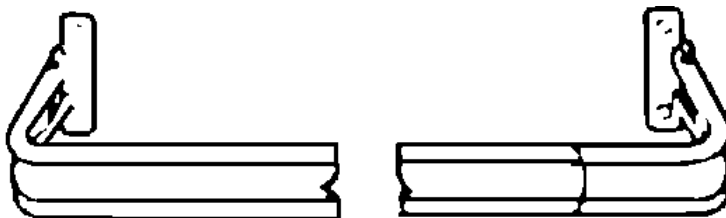
265055 2" x 375'

Curtain Rods

Single, white, extendable rod projects 2-1/2".

265712 28"-48"; 50/Ctn.

265714 48"-84"; 20/Ctn.



BLINDS



Mini-Blinds

1" PVC, lead-free with wand in classic white sized to fit manufactured housing windows. 10/Ctn.

260500 32" x 30"

260506 48" x 64"

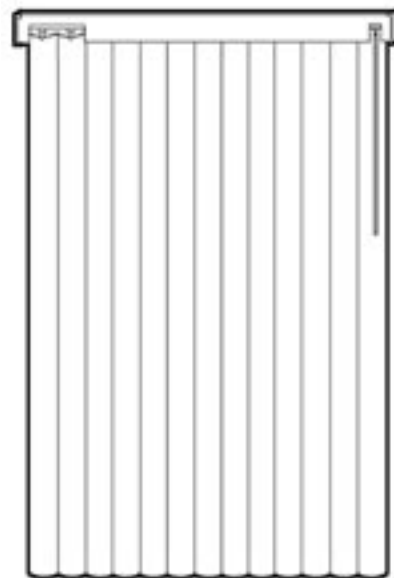
260501 32" x 56"

260507 33.5" x 54"

260502 38" x 56"

260503 48" x 56"

260505 23.5" x 54"



Vertical Blinds

3.5" PVC, lead-free with wand in classic white, perfect for sliding glass doors.

260504 78" x 78"

Phone Jack

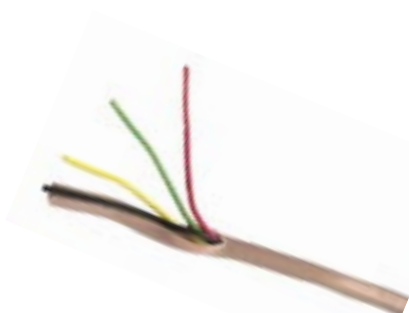


Surface mount, snap cover for neat appearance with prewired combination head screw terminals. For surface mount onto baseboards, walls and other flat surfaces. Self-tapping mounting screws and adhesive pad provided. 4 conductor.

222820

Phone Wire

220315 1000'; Bulk



Bathroom Accessories



Chrome Medicine Cabinet

Fits 2" recess; installs with 4 screws. Three metal shelves with 6 different slots for height adjustments. Toothbrush holder. Reversible right or left hand door opening. Rough opening: 14"W x 24"H x 2"D. Overall 16-1/4"W x 26-1/4"H. 4/Ctn.

378121

Cosmetic Box



Baked white enamel cabinet with triple-plated chrome trim. 24"W x 8"H x 4"D. 8/Ctn.

378126

378127 Replacement Door



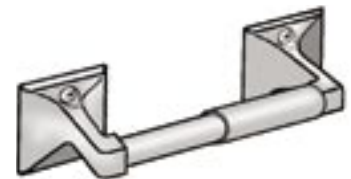
Wood Medicine Cabinet

Measures 20"W x 4"D x 16"H, all wood with beveled glass mirror. Boxed and bar-coded.

378122 White

378123 Light Oak

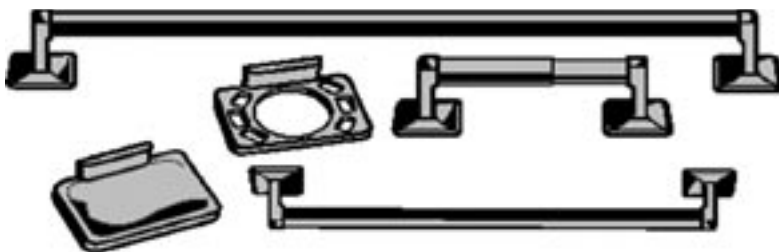
Tissue Holder



Zinc chrome-plated metal, spring-loaded, concealed screw mounting. Screws included. 12/Ctn.

370320

5-Pc. Chrome Bath Sets



▲ 1 large & 1 small towel rack

▲ 1 soap dish

▲ 1 tissue holder

▲ 1 toothbrush/glass holder

370325

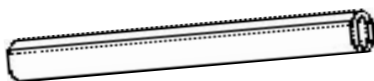


Shower Curtain

Attractive, subtle white patterns on white backgrounds. 12/Ctn.

378300

Shower Rod



5' polished aluminum rod. Flanges sold separately.

377225 Rod

Flanges

1' diameter flanges with screws.



377226 2/Bag

Shower Rings



Chrome-plated. 12/Card.

377227

Smoke Alarm

120VAC, ionization sensor, meets U.L. Standard 217. Interconnectable. Quick connect wiring harness and Fast Install mounting bracket. Outside diameter is 5-3/8" for better coverage of cutouts.

141302 Electric

Includes 9V carbon zinc battery, ionization sensor, meets U.L. Standard 217. Interconnectable. Quick connect wiring harness and Fast Install mounting bracket. Outside diameter is 5".

141303 Battery



Smoke Alarm w/Battery Back-up



120V ionization sensor with 9V battery backup in side drawer. Fastest installation available with Quick Connect pigtail that locks into place. Green LED under test button indicates 120V power; red LED flashes once every 60 seconds to indicate battery power. Meets UL 217 standard. New UL mandated repeating alarm horn pattern (85 dB) - three beeps, pause, three beeps, pause. New high tech component on circuit board allows for very accurate setting of UL mandated sensitivity - fewer nuisance alarms. Outside diameter is 5-3/8" for better coverage of cutouts.

141305

Carbon Monoxide Detector



Meets UL 2034 standard for residential carbon monoxide alarms. Plug-in 120V AC, 60 Hz. Samples the air once every second for carbon monoxide. Proprietary COtran sensing system is individually calibrated at four CO levels for greater accuracy. The 85dB horn will sound full alarm before CO reaches dangerous levels. Silence button to silence alarm while unit continues to monitor CO levels.

- Power status indicator: green LED shines continuously when unit has power
- Service status indicator: flashes yellow to indicate a malfunction and replace the unit. Horn will chirp once a minute.
- Alarm status indicator: Flashes red to indicate CO is approaching dangerous levels. Alarm will sound continuously.

250105

BRK Fire Extinguishers

- * All fire extinguishers are UL Listed and use DOT approved cannisters

First Alert Kitchen Fire Extinguishers



5-BC made especially for the kitchen. White with white mounting cap and pop-up pressure indicator.

340510 6/Ctn.



BC Extinguishers

Recreational. Fights flammable liquids and electrical fires. Rated 5-B:C. Large, easy to read gauge. Includes Coast Guard approved bracket for marine use. Sodium bicarbonate. 2 lbs.

340501 6/Ctn.

Rated 10-B:C. Fights flammable liquids and electrical fires. Large, easy to read gauge. Includes Coast Guard approved bracket for marine use. Sodium bicarbonate. 2 lbs, 7 oz. Recommended for garage/workshop.

340507 6/Ctn.



ABC Extinguishers

Multi-purpose. Non-toxic tri-class dry chemical agent (monoammonium phosphate) fights flammable liquids & electrical fires as well as wood, paper and cloth fires. Recommended for commercial use.

340508 1A10BC: 2 lbs., 9 oz.; 6/Ctn.

340509 Heavy-duty Rechargeable (fits easily inside standard fire box)
3A10BC: 5 lbs.; 6/Ctn.



Floor Solutions

Squeak-ENDER™

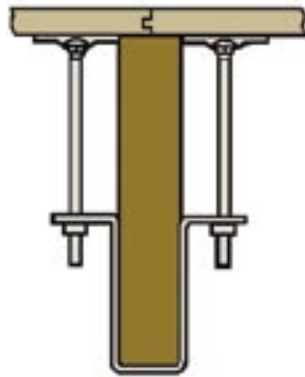


Guaranteed to end squeaky floors!

Amazing new product ends annoying floor squeaks forever. Requires no special tools, won't damage floors, installs with just a turn of the wrench—and it's guaranteed!

261025

Seam-ENDER

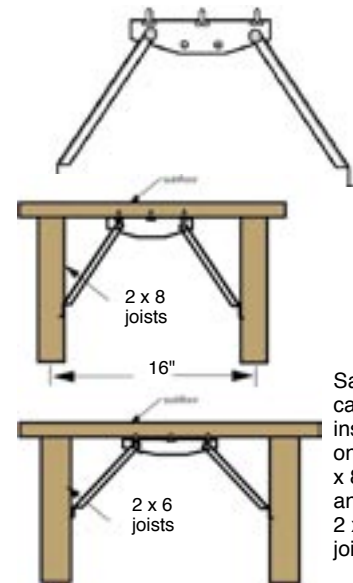


Accommodates 2 x 6 through 2 x 10 joists

Uniformly draws tongue and groove decking to the joist to eliminate unsightly seam pops. Easy installation requires no special tools and does not damage floor coverings. Made in the U.S.A.

261027

Sag-ENDER



Same unit can be installed on both 2 x 8 joists and 2 x 6 joists.

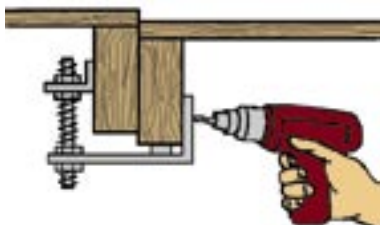
Supports subfloor sags, dips and weak spots. Easy installation requires no special tools and does not damage floor coverings. Made in U.S.A.

261026

Marriage Joint Adjustment Bracket

Includes:

- ★ One 3.5" x 5" angle
- ★ One 2.5" x 2" angle
- ★ One 3/4-16" x 5" threaded nut
- ★ Four 3/4-16" jam nuts
- ★ Nine #12 x 1.5" screws



Makes adjustment of marriage joints faster and easier, needs no special tools, just a Phillips head screwdriver & adjustable wrench.

261028

Squeak-No-More Kit

NEW!



Get rid of annoying floor squeaks with this kit and a power screwdriver. Works equally well on hardwood floors as well as vinyl and carpeted floors (even Berber!) No need to tear up the carpeting either. Simply locate the squeak, follow the simple 1-2-3 instructions and you're done.

261029 Kit
261030 Scored Screws; 250/Ctn.

Kit includes:

- ★ One alignment and depth control fixture
- ★ One bit driver
- ★ 50 scored screws
- ★ Instruction booklet

How does it work?

1. Locate the floor joist as shown in instructions. Then, push the alignment and depth control fixture firmly into the carpet.
2. Place your weight around the fixture, and drive the scored screw down as far as the fixture will allow it to go.
3. Place the screw gripper (located on alignment fixture) over the screw head, then rock the fixture left to right snapping the head off. The screw breaks at the weak spot that is consistently just below surface of the floor.

Floor Registers

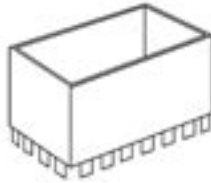
Metal Registers



Drop-in style with mounting holes. 1/2" spaced, rolled fins. Opposed blade dampers. Wheel-operated adjustment.

- 421301** Brown, 6" x 6"
- 421304** Brown, 4" x 8"
- 421305** Brown, 4" x 10"
- 421306** Brown, 4" x 12"
- 421302** White, 4" x 8"
- 421303** White, 4" x 10"
- 421307** White, 4" x 12"

Register Collar



- 421324** 4" W x 10" L x 6" D
- 421325** 4" W x 8" L x 6" D

Register Face



Face plate only.

- 421320** 4" x 8" White
- 421321** 4" x 10" Brown
- 421322** 4" x 8" Brown
- 421323** 4" x 10" White

Polyvent Registers

Get rid of dangerous jagged edges forever!



Molded plastic—no more bent fins, scratches, dents or jammed mechanisms, no more jagged edges that might cause injury. So durable, it's virtually indestructible and even dishwasher safe for easy cleaning. Molded in decorator colors, not painted, thereby eliminating fumes and waste harmful to the environment.

- 4" x 10"**
- 421315** White
- 421316** Brown
- 421294** Bone
- 421295** Wedgewood Blue
- 421296** Hunter Green
- 421297** Pearl Gray

- 4" x 8"**
- 421317** White
- 421318** Brown
- 421290** Bone
- 421291** Wedgewood Blue
- 421292** Hunter Green
- 421293** Pearl Gray

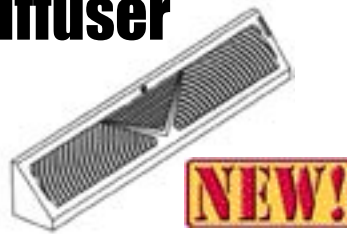
Air Deflector



High quality, durable floor air deflector of clear plastic directs the air flow more evenly for better temperature control in any season. Easy to install; heavy-duty magnets hold deflector in place on the register. Adjusts from 10" to 14".

- 421310** 48/Ctn.

Baseboard Diffuser



- 421308** White, 18"

Register Filters

Not only do they provide a fresh, clean scent, they also trap and control pollen, dust and dust mites, tobacco odors and mold, mildew and fungus spores. Fits most registers. Non-toxic. Excellent for allergy and asthma sufferers. Installs in seconds. Fragrance lasts approximately three months. Packaged for pegboard display, coated in saran to lock in scent.

- 180205** Potpourri 3/Pk
- 180206** Pine 3/Pk

Fresh scent plus less dust & odor



Prices and Specifications Subject to Change without Notice

Floor Grill

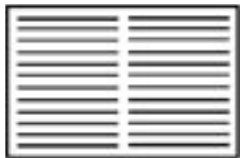


Made of heavy gauge steel and a one-piece face for maximum strength and a smooth flat walking surface. Brown finish is tough and durable. Individual see-thru shrink pack.

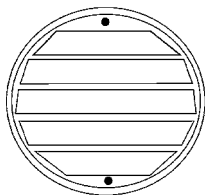
- 103148** 12" x 20"

Vents

Louvered ventilation for side-wall of mobile homes and RVs. Can be used to cover dents or scratches. Made of heavy-gauge aluminum and pre-painted white.



421107
8-1/2" x 12"; 25/Ctn.



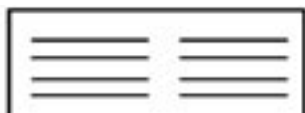
421102
4-1/2" Dia.; 100/Ctn.



421104
4-3/4" x 6-3/4"; 25/Ctn.



421108
8-1/2" x 18"; 25/Ctn.



421106
4-3/4" x 12"; 25/Ctn.

Adjustable Screen Vent

- Economical ventilation year-round.
- Fingertip adjustment fits most sash windows
 - Allows draft-free air but keeps weather & insects out
 - Metal louver panels shed rain, sleet & snow
 - Painted metal rails & varnished wood ends
 - Easy to install from inside — needs no tools.

462328 10" High, Adjustable 22" to 37" Wide



2" Metal Plumbing Stack

Galvanized steel for 1-1/4" or 2-1/2" pipe. Removable cap.

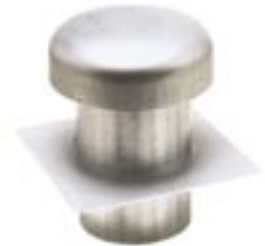
425003 50/Ctn.



Roof Cap for Vertical Fans

Cap & flat flange 7" dia. attic vent, 9-1/4" above roof line.
Note: will not work on sloped roof

421202 8/Ctn.



Metal Plumbing Stack

Vent cap for plumbing vent pipe. Rolled edge to prevent water run-over.

425002 5" diameter **425208** 4" diameter



NEW!



Plumbing Cap

White plastic for 1-1/2" dia. pipe.

425004 50/Ctn.



Replace-All Plumbing Cap

Saves time and \$—no need to install a complete plumbing cap. Plastic. 12/Ctn.

420100

Sidewall Exhaust Fans



115V; CSA and UL listed. Sold without grille.

420709 White Grille

Replacement Parts

420703 Screws for Grille (3.5" Model)

421401 Fan Blade (BVA0312-00)

221802 Pressure Switch (V0140-03)

420103 115V Motor

262000 Sidewall Chain

Bath Vents

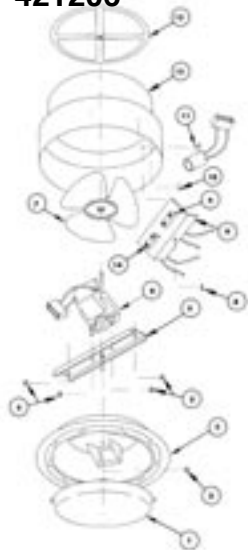


- * Ultra-quiet, U.L. Listed, 115V motor.
- * Vertical exhaust
- * Foam damper for a secure seal when not in operation
- * Simple installation with plug-in motor & lamp, snap-in junction box cover
- * 7" rough opening for 421206 and 421201
- * 50 CFM; 8/Ctn.



#V2244 w/Light

421206



Replacement Parts for 421206

421207 Plastic Light Lens (#1)

421208 Foam Damper Assembly (#13)

421401 Blade Only (#7)

421204 Motor BCD0388-00 (#6)



421201

#V2262-50 w/out Light

421206

Replacement Parts for Old Style 421206

420103 Motor BDC0190 120 VAC W/O Plug

Range Hood Vents

420510

Louvered 1.75" inlet, white. 3-1/3" x 10.5" RO.



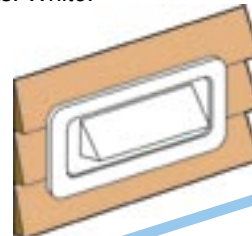
420509

Weatherproof with lockable damper. 1.75" inlet, white. 3-1/3" x 10.5" RO. Colonial White.



420500

Professionally finished look for lap siding. Simple to install, saves time & lowers cost. Reduces leaks. White.



421201

Replacement Parts for 421201

421402 Grill & Spring Assembly (#1 & #2)

421401 Blade Only (#9)

421204 Motor BCD0338-00 (#8)

Replacement Parts for Old Style 421201

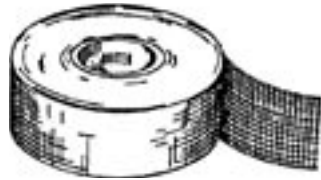
421203 VB0542-00 Grill Cover w/Plug

420103 Motor BDC0190 120 VAC W/O Plug



Tape

Carpet Seaming Tape



Quick-Lock tape 4" x 22 yds.

360705 10/Ctn.

Carpet Tape



High-holding power, silicone-coated release liner. Shear adhesive film. Adhesion to practically all surfaces including fabrics. Good moisture and vapor barrier. 2" x 25'.

360088 24/Ctn.

Masking Tape

Standard-grade masking tape. Good pressure sensitive qualities, resists water, solvents and oils. 60 yds.

360702 1-1/2"W; 24/Ctn.



Putty Tape



Heavy, mastic flexible, non-hardening material remains pliable as applied or as packaged. Special silicone-treated release paper. Can be pressed into any shape to form a water-tight and air-tight seal. Adheres to metal, glass and plastic.

360090 1/8" x 3/4" x 30'; 24/Ctn.

360105 1/8" x 1" x 30'; 20/Ctn.

360106 1/8" x 1-1/2" x 30'; 12/Ctn.

Duct Tape



Economy Duct Tape
Roll: 2" x 60 yds.

360600 24/Ctn.

Top Quality Duct Tape
Extra strong. Tears evenly, does not bubble up. Gray color. 2" x 60 yds.

360501 24/Ctn.

Foam Tape



Medium density, single-face non-interconnecting cell vinyl w/easy release liner. Synthetic permanent adhesive for easy application even on irregular curved surfaces. 3/16" x 30'. Mylar backed. 32/Ctn.

360110 3/4" W

360108 1/2" W

Electrical Tape



High dielectric black plastic tape insulation. High elongation, excellent adhesion, high tensile strength. 7-mil vinyl backing.

360401 200/Ctn.

Foil Tape



For duct board system sealing. Prevents heat loss. Blocks odors and moisture.

360502 2" x 50 yds.

360503 3" x 50 yds.

Foam Tape



Superior self-adhesive foam insulating tape works on hot and cold pipes, valves and fittings. 1/8" x 2" x 30'

360112

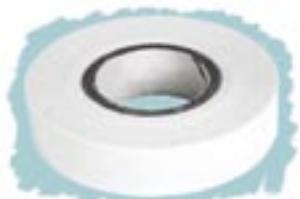
Tacky Tape

For low, medium & high pressure/high velocity air-carrying duct systems. Adheres to fiberglass, aluminum, steel and iron. Special release backing, easy to remove after positioning. 3/4" x 1/8" x 30'.

360800 24/Ctn.



White Close-Off Tape

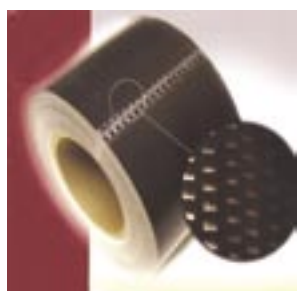


360725 2" x 36 yds.

360726 4" x 36 yds.

Mending Tape

Perfect for those small patching jobs!



Easy-to-use tape form of mending material. Perfect for those small jobs of patching bottomboard.

360006 4" x 180' Roll

Economy Mending Tape

Same as above, only without paper backing.

360011 4" x 165' Roll

Seal-Tite #620 Heavy Duty Bottom Board Tape



Premium black fabric tape with high tack -- a heavier adhesive layer, twice the thickness of economy cloth tapes, for jobs that require exceptionally high peel and sheer strength. 2" x 36 yards/roll.

360704 24/Ctn.

Webbing Strap



Black polypropylene strap for hanging flex-duct, etc. 1-3/4" tensile strength: 440 lb. average; 3" tensile strength: 640 lb. average.

262550 3" x 300'

262551 1-3/4" x 300'

Black Fabric Bottom Board Tape



Specifically made for patching and splicing bottom board paper used in mobile homes. Tears straight, no curl. Certified to meet the HUD specification of the Office of Mobile Home Standards. 2" x 60 yds.

360703 24/Ctn.

HVAC Duct Tape



Meets UL 181B-FX for duct installation with HVAC equipment. 2" x 60 yards.

360450

Black Butyl Tape



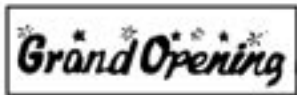
Top-quality, ready-to-use. Permanent resilience and elongation. For problem areas such as between roof and side panels. Quick-release paper for easy application. 16/Ctn.

360115 2" x 30'

360117 3/4" x 30'

Signs & Banners

Sales Banners



30" x 10'. 100% heavy nylon with water repellant finish. Strong brass grommets in each corner for long-lasting outdoor use. 16" letters of black on yellow. 12/Ctn.

- 265720** Grand Opening
- 265721** Sale
- 265722** Kiss Your Landlord Goodbye
- 342015** Special of the Week
- 265725** Quality Manufactured
Homes at the Best Price
- 265726** Clearance Sale
- 265727** Open House

Metal Double Sided Sign



Light-weight metal alloy, baked on enamel finish, scratch resistant. Will not fade, crack, peel or rust. Folds for easy storage. Black on interstate yellow. 12" letter height and 2" letter stroke.

- 342009** 15" x 6'
- 342010** 18" x 7'
(PA Approved)

Vinyl Double Sided Sign



Features a strong 1/4" poly rope sewn the entire length; all stress goes to the rope, not the sign, so there are no grommets to tear. 12" high letters are screen printed black on interstate yellow. "Over Size Load" on one side, "Wide Load" on the other.

- 342016** 20" x 84"; 25/Ctn.

Ohio "Oversized"

12" x 60" vinyl open weave mesh sign says "Oversized Load" in 8" letters. For escort vehicles. Meets Ohio DOT regulations.

- 342003**

"Mobile Home Supplies"

3' x 5' nylon banner lets customers know you stock "Mobile Home Supplies."

- 265724**

Poly-Coated Fabric Signs

Durable, weatherproof, reinforced metal grommets, double stitching, Tyvek corners for extra strength. Attach with shock cords. Black letters on interstate yellow.

- 342001** Over Size XX Load 18" x 7' (Sleeves for 10, 12, 14 and 16 to meet Arkansas sign requirements)
- 342002** Over Size Load 18" x 8'
(Michigan Approved)
- 342005** Danger Wide Load Ahead 18" x 4'; 25/Ctn.
- 342007** Danger Wide Load Follows 18" x 4'; 25/Ctn.

Hula Pennants



Multi-Colored:

4 mil polyethylene plastic in 30' strings of alternating red, green, yellow, white and blue fringes.

- 265702** Multi-Colored; 25/Ctn.



Red/White/Blue:

Each 30' pennant string has alternating red, white and blue hula pennants, creating a striking visual image. There are 32 full color 18' sections per string. Durable in any weather. 25/Ctn.

- 265703** Red/White/Blue

Flag Pennant



12" x 18" V-shaped pennant flags; weather-resistant economy polyethylene, double sewn on plastic covered, high strength, sag-resistant header. 120'. 25/Ctn.

- 265701**